



Wairarapa Hockey Association

Clareville Sports Turf
Chester Road
Carterton

THE NEW PAVILION & TURF

14th August 2008

Dear Players, Families and Supporters,

We are delighted to announce the Wairarapa Sports Artificial Surface Trust has raised the majority of the funds required to install a water turf at Clareville and are now able to confirm plans are well underway to ensure the new surface is completed by the 1st of May 2009.

The addition of a second turf will increase available turf time for practices, warm-ups, holiday training programmes and allow all games to be played on turf at more suitable playing times. These and other benefits will all help Wairarapa players reach their potential and maximise team performances. Two turfs will also allow the Wairarapa to host National Tournaments which will provide many economic benefits to the region.

As part of the project it was agreed that it was vital a top class pavilion was built to benefit both players and supporters. It is now up to our Association to ensure that funding is available for the pavilion. The intention is to build a two storey pavilion that will be situated at the halfway line of the new turf and at the north – eastern end of the existing turf. It will include four changing rooms downstairs and a large lounge area upstairs along with bar and catering facilities. The Association's office will also be included. It will be a wonderful facility that we are sure will benefit everyone – especially supporters on those cold winter days and nights!

We envisage that building will take place during February & March and be carried out over a number of weekends by arranged working bees which we hope as many of you as possible will be able to be part of. We are lucky that plenty of our players come from families that include builders, plumbers and electricians, etc.

In the meantime we will need to raise as many funds as possible toward the project. At this stage we don't have a total amount required as we will be asking for donations of building supplies, etc, toward the project. Once again if you are in a position to help with these donations please let us know.

The two initial fund raising projects we are looking at are as follows:

1. **A Wairarapa Hockey Supporters Club.**

This will allow individuals and families to support the project at various levels. A list of all supporters will be displayed on a wall of the pavilion. We would like to think this is something everyone can be involved with. Please refer to the attached form to make your donation. If you require extra forms please contact us.

2. **The sale of advertising hoarding space around the two turfs.**

This will be a great opportunity for local people to not only support the complex but to also advertise their businesses at a facility that gets an enormous amount of use and exposure to players and visitors. Space will be made available on a first in basis. The cost of the boards will be met by the Association while signage will be paid for by each advertiser. Advertisers will have a right of renewal.

Please refer to the attached form to make your donation. If you require extra forms please contact us.

If you are able to assist with the sale of advertising or if you have any questions please don't hesitate to contact us or ring Matthew Spicer on 06 3788641 or 0274 995920.

We will keep you all in touch as to the progress and the website "www.wairarapahockey.org.nz" will be updated regularly.

In the meantime we ask you to join the "Supporters Club" as it will be a great help. If you have friends or family who are keen to support and would like a copy of the donation form they can either download one from the website or contact the Hockey Office direct.

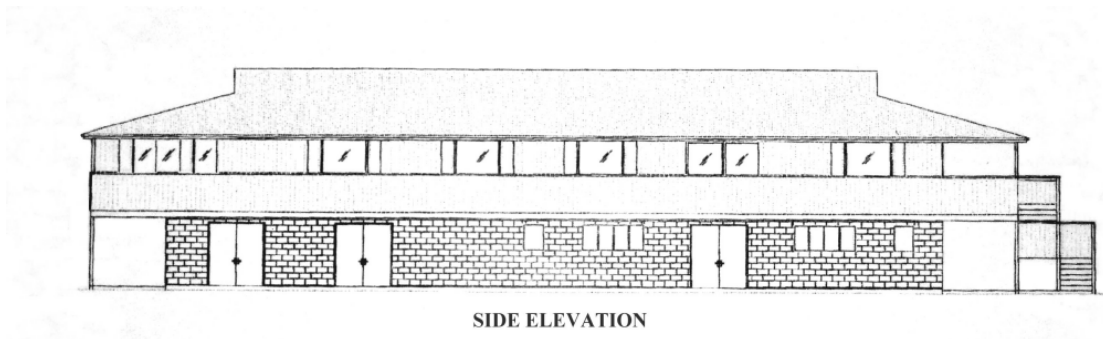
Finally we would like to thank you all in advance for your support in making the pavilion possible. This is a great project and the new turf and pavilion are going to be a wonderful addition to the Wairarapa, not only to current hockey players but also future players, their families, supporters and local businesses.

Please don't forget "This is your facility".

Yours Sincerely

David Blackwood
(On behalf of the Wairarapa Hockey Association)

Artists impression of the new pavilion.



Top Floor includes:

Large lounge
Bar
Kitchen
Office
Toilets
Viewing Balcony

Ground Floor includes:

Four Changing rooms
Showers & Toilets
Umpires Room
Storeroom